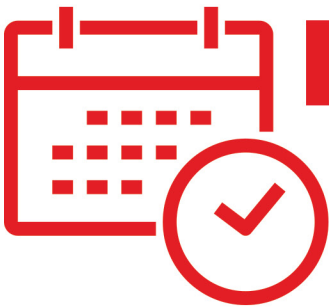


# Visitor Safety



We are excited for you to visit Grace College! We are committed to your safety and CDC guidelines as we welcome you to our beautiful campus. Prior to your visit, please review the following protocol.



## PLANNING FOR YOUR VISIT



Please come only if everyone in your family/group is feeling well. If not, please reschedule for a later date or [virtual visit online](#).



Protective face coverings are required unless wearing a face covering negatively affects your health.



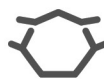
Consider limiting the number of people that join you on your visit.



## FOR YOUR HEALTH AND SAFETY, WE WILL



Practice social distancing



Wear protective face coverings



Limit the number of visitors on campus



Introduce ourselves without handshakes



Open doors for you



Have hand sanitizer readily available



Conduct small group tours



Clean and sanitize between visitors



Observe the same protocols in meetings with faculty, coaches or other staff

Learn more about Grace College's full response at [www.grace.edu/covid-19](http://www.grace.edu/covid-19)

We look forward to your arrival at Grace! Please call us at 866-974-7223 or email [visit@grace.edu](mailto:visit@grace.edu) if you have any questions about your campus visit.