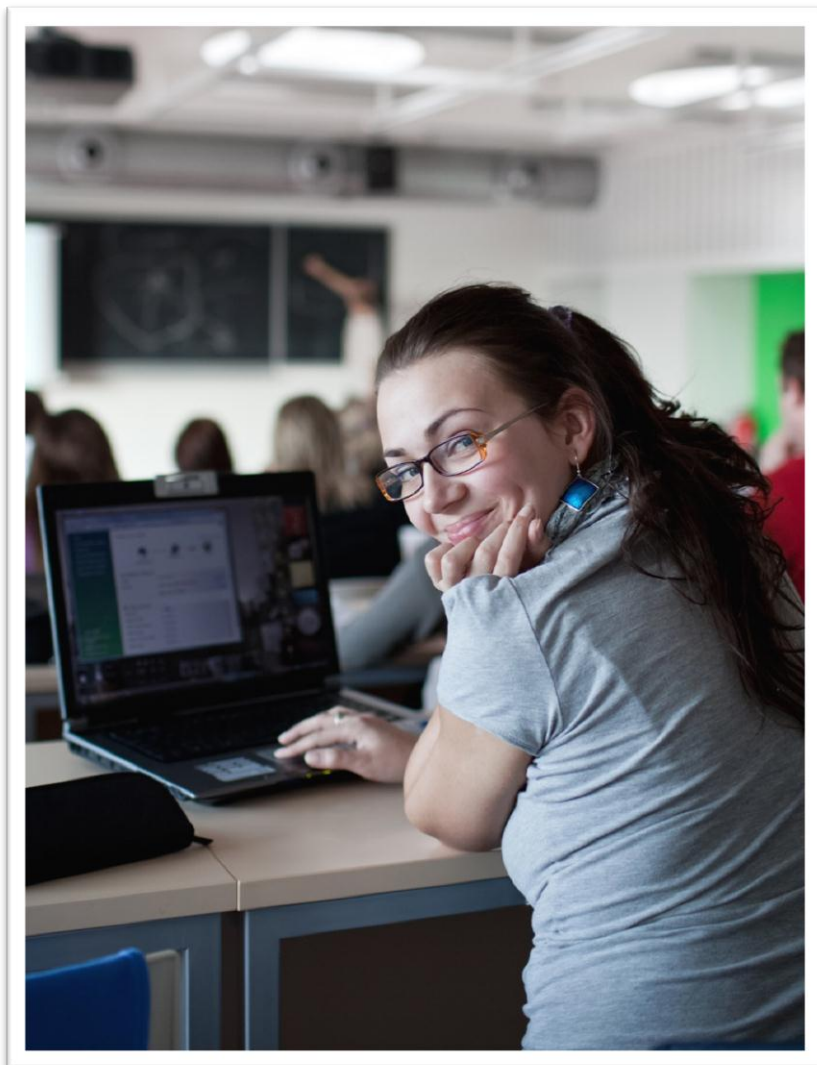


Weber School at Grace College



Faculty

Tim Ziebarth, M.A., M.B.A.
Dean, School of Professional and
Online Education

Indianapolis

Shirley Smith Ph.D.
Interim Site Director

Jennifer Anderson M.S.
Student Services Coordinator

Program Mission and Goals

The Weber School at Grace College offers a biblically anchored, affordable, and accessible Christian education to college-age students in urban areas by offering Associate of Arts in General Studies or Biblical Studies.

An associate degree better prepares students for employment and readies students for completion of a bachelor's degree in the field and school of their choice. By obtaining the Grace Core at The Weber School students are able to reduce the amount of debt accumulated by a traditional four-year college education. By being located in urban areas such as, Indianapolis and Detroit, more students are afforded the opportunity to be a part of the Grace College community.

Weber School Program Description

The Weber School at Grace College is a two-year program designed for the college freshman and sophomore who desires affordable and accessible higher Christian education. This 60-hour program leads to an associate degree with an emphasis on liberal arts or general business which can easily lead to the completion of a bachelor's degree through our GOAL degree completion program

Program Purpose

The Weber School at Grace College exists to provide postsecondary education that is affordable, accessible and anchored in the Word of God.

Schedule and Delivery Format

Classes are offered on-site Monday through Thursday during the two semesters. Two additional online courses are offered during the summer. All students will need regular access to a computer as classes are a hybrid of classroom, web-facilitation, and online learning. Information regarding the technology and user-skill requirements is available on the technology support page of the college's web site. Columbus, Ohio now offers online opportunities.

Admission Requirements

Admission requirements for applicants to The Weber School at Grace College are the same as those for applicants to Grace College, which include the student's high school transcript and ACT or SAT score (TOEFL for international students). Weber students can enjoy an easy transfer to Grace College with an abbreviated application to Grace College. Online applications are available on the institution's Web site.

Notice of Nondiscrimination

Grace College and Seminary is a private, not-for-profit, faith-based exempt organization as described in Section 501 (c) 3 of the Internal Revenue code. In compliance with applicable federal and state laws, Grace College and Seminary does not discriminate on the basis of race, color, national origin, age, sex, or disability in its administration of its educational policies, admissions policies, scholarship and loan programs, and athletic and other school-administered programs and activities, or in employment.

The following person has been designated to handle inquiries regarding the Notice of Nondiscrimination:

Carrie Yocum, Title IX Coordinator and VP of Administration and Compliance
Grace College and Seminary
McClain 104
200 Seminary Drive
Winona Lake, IN 46590

Inquiries may also be addressed to the U.S. Department of Education's Office for Civil Rights at 400 Maryland Avenue, SW, Washington, DC 20202-1100.

Community Lifestyle Pledge

Students agree to show respect for the faith commitment that Grace practices and agree to abide by certain of the institution's community guidelines (avoidance of disrespecting others, sexual misconduct, illegal drugs, gambling, coarse or obscene language, tobacco, alcoholic beverages, and such conduct) while on campus or engaged in Grace activities. The student understands that this extends to any advocacy initiatives in which the individual might participate while a Grace student.

Note about the Catalog

Each program at the institution maintains a catalog in which basic academic information related to the program's goals, expectations, admission, policies, accreditation, and other pertinent information is described. This applies to undergraduate, non-traditional (e.g., online, adult degree completion), graduate, and seminary programs.

Grace makes every attempt to provide information that, at the time of publication, most accurately describes the policies, procedures, and requirements of the institution and its individual programs.

The provisions of the academic catalogs are, therefore, to be considered a guide and not to be regarded as a contract between any student and the institution. Course content and institutional policies governing admissions, tuition, and campus life are under constant review and revision.

Grace reserves the right to change any statement contained within the catalog at any time and without prior notice including academic provisions, policies, or requirements (e.g., modifications to classes, fees, personnel, academic policies, and programs) and the right to withdraw or amend the content of any courses described in the catalogs as may be required or desirable by circumstances. Grace will, however, make every attempt to give students reasonable prior notice to changes in policies and other catalog content when possible and rarely implements policy changes during an academic year.

Courses of study for non-traditional, graduate, and seminary programs and check sheets for undergraduate students may undergo revisions; however, these are typically implemented in the fall of the new academic year.

All students are expected to be familiar with the catalog(s) associated with their selected program(s) of study with the understanding that policies and procedures of their selected program(s) may change from year-to-year. The current year's catalog should, in most situations, be considered the catalog applicable to the student.

In some programs, students are asked to acknowledge in writing their receipt of the program's catalog.

Changes to an academic catalog that are necessary following the start of the fall semester will be noted as an addendum to the original catalog.

Archived catalogs are maintained on the institution's Web site.

It is each student's responsibility to schedule regular meetings with his or her academic advisor and to be knowledgeable about institutional requirements, academic regulations, and calendar deadlines specified in the catalogs and academic program publications. Students should read the catalog carefully and consult with an advisor to determine how these policies relate to their individual circumstances.

Contact

For additional information about admission requirements or course enrollment and completion, please contact the staff at the Weber School at Grace College:

INDIANAPOLIS

Shirley Smith, Indianapolis Site Interim Director

Phone: **317-200-3837**

OR 1-800-544-7223 Ext 6205

Email: smithsd@grace.edu

Courses for the Associate of Arts in General Studies

An associate degree (60 hours) is comprised of the 13 general education Grace Core courses (39 credits) required of all Grace College students. In preparation for a bachelor's degree, students take 3 credits of math and social science for a B.S. or 3 credits of a language for a B.A. An additional 21 credits completes the liberal arts for the associate degree.

All courses are designed and approved by the Grace College faculty and are comparable to those taught at the main Grace College campus. Courses are taught by Grace faculty or Grace approved instructors.

Grace Core (39 credits)

The Grace Core is the required general education curriculum expected of all students at Grace College.

Bible/Philosophy/Ethics

1. BIB1050 Exploring the Bible
2. BIB2010 Scripture and Interpretation
3. FYE1010 Freshman Foundations
4. PHI3200 Philosophy and Critical Thinking

Humanities

5. ECN3000 Consumer Economics
6. HIS 1380 Contemporary America and the World
7. HUM2100 Creative Arts and Culture
8. HUM2200 World Cultures

Students who transfer to main campus will be required to go on a cross-cultural or GoGrace mission trip.

Communications

9. COM1100 Public Speaking
10. ENG1100 Effective Writing

Math and Sciences

11. PSY1100 Introduction to Psychology
12. MAT3200 Probability and Statistics
13. SCI1140 Physical Science Survey

Liberal Arts Emphasis (Choose 7 courses)

14. ART2110 Art and Design Fundamentals

15. SOC1100 Introduction to Sociology
16. HIS 3390 Religion in American History
17. COM2130 Interpersonal Communication
18. POS2010 Introduction to Political Thought
19. MLD1000 Principles of Ministry Leadership
OR BHS2520 Leadership Principles and Development
20. MAT1120 College Algebra
21. APL2030 Applied Learning (up to 6 credits)
22. BIB3300 Essential Doctrinal Themes
23. LIT3270 World Literature

Courses for the Degree in Associate of Arts in Biblical Studies

Bible/Philosophy/Ethics

1. BIB1050 Exploring the Bible
2. BIB2010 Scripture and Interpretation
3. MIS3220 Principles of Prayer
4. PHI3200 Philosophy and Critical Thinking
5. BBL-3140 Biblical Backgrounds
6. BBL-3010 Defining Doctrines
7. PHI3000 Apologetics in a Post-modern World
OR BBL3130 Understanding World Religions
8. GOL-3000 Adult Learner and Portfolio Instruction

Humanities

9. ECN3000 Consumer Economics
10. HUM2100 Creative Arts and Culture
11. HUM2200 World Cultures
Students who transfer to main campus will be required to go on a cross-cultural or GoGrace mission trip.

Communications

12. COM1100 Public Speaking
13. ENG1100 Effective Writing

Math and Sciences

14. PSY1000 Introduction to Psychology
15. SCI1140 Physical Science Survey

Biblical Studies Courses (15 Credits)

16. BBL2010 New Testament
17. BBL3090 Spiritual Formation
18. ICS3650 Intercultural Ministry
19. BIB2310 History of Christianity
20. BBL2020 Old Testament

Students who wish to transfer credits in to the A.S. in Biblical Studies degree must submit official transcripts for academic review to the School of Professional and Online Education. The transfer credit limit is 15 credit hours (or five courses)

Courses for the Associate of Arts in General Business

Grace Core (39 credits)

The Grace Core is the required general education curriculum expected of all students at Grace College.

Bible/Philosophy/Ethics

1. BIB1050 Exploring the Bible
2. BIB2010 Scripture and Interpretation
3. FYE1010 Freshman Foundations
4. PHI3200 Philosophy and Critical Thinking

Humanities

5. ECN3000 Consumer Economics
6. HIS 1380 Contemporary America and the World
7. HUM2100 Creative Arts and Culture
8. HUM2200 World Cultures

Students who transfer to main campus will be required to go on a cross-cultural or GoGrace mission trip.

Communications

9. COM1100 Public Speaking
10. ENG1100 Effective Writing

Math and Sciences

11. PSY1100 Introduction to Psychology
12. MAT3200 Probability and Statistics
13. SCI1140 Physical Science Survey

Business Emphasis (Choose 7 courses)

14. BUS101 Foundations of Business
15. BUS2430 Principles of Management
16. MKT2150 Marketing Principles
17. ACC2110 Financial Accounting
18. BUS2220 Microeconomics
19. MAT1120 College Algebra
20. COM2130 Interpersonal Communication
21. APL2030 Applied Learning (up to 6 credits)

COURSE DESCRIPTIONS

ACC 2110 Financial Accounting

Develops an understanding and application of basic financial accounting principles. Emphasis on building and using basic financial statements and a manager's use of accounting data. This course and ACC2120 together serve as the first year of accounting. Three hours.

ART2110 Art and Design Fundamental

From the simple application of color to the complex devices that create illusionary space, this foundational lecture/studio course concentrates on the basic elements of two-dimensional and three-dimensional design.

BBL2010 Understanding the Old Testament

An introduction to the Old Testament with special reference to background, historical setting, literary

composition, theology and message. After successfully completing this course, the student should be able to demonstrate a knowledge of background issues which introduce one to the study of various concepts of the Old Testament, the historical milieu of each Old Testament book studied, the purpose and general content of each Old Testament book studied, the use of the Old Testament in modern ministry, and the foundation the Old Testament provides for the New Testament. Three hours.

BBL2020 Understanding the New Testament

This course introduces the New Testament with special reference to background, historical setting, literary composition, theology, and message. After successfully completing this course, the student should be able to demonstrate a knowledge of background issues which introduce one to the study of various concepts of the New Testament, the historical milieu of each New Testament book studied, the purpose and general content of each New Testament book studied, the relationship between the New and Old Testaments, and the use of the New Testament in modern ministry. Three hours.

BBL3090 Spiritual Formation

Students will explore the various dynamics that converge to produce maturity in the life of a Christian. They will seek to construct a theory of spiritual formation based on a practical knowledge of God, a realistic awareness of self, a full-orbed understanding of pertinent scriptural insights, and a historical perspective of various approaches to spirituality. They will examine the necessity of the integration of the individual pursuit of spiritual maturity with the corporate dimension. The approach of the course will include practical application along with classroom discussion and outside research. Prerequisite: BIB 2010. Three hours.

BBL3140 Biblical Backgrounds

Students will seek to understand how people thought, communicated, and lived in the ancient world during the OT, NT and Intertestamental Periods. Special emphasis will be placed on key people groups and political, cultural, theological, and literary developments that form the background to the Bible. Students will learn to use insights from geography, cultural anthropology, archaeology, sociology, philosophy, politics, literature, and history for the interpretation of Scripture in light of the history and culture of the people to whom it was addressed. Three hours.

BBL3010 Defining Doctrines of the Christian Faith

Students will identify the central affirmations of Christianity that distinguish orthodoxy from heresy, heterodoxy, liberalism, and neo-orthodoxy. Students will be able to support each defining doctrine from Scripture. The role of creeds, church councils, and doctrinal statements in defining and preserving orthodoxy will be explored. Students will appreciate the diversity within Christian orthodoxy, while the central affirmations are preserved. Prerequisite: BIB1050. Three hours.

BIB1050 Exploring the Bible

This course provides a survey of the biblical story in its progressive unfolding of the history of redemption within the framework of creation, fall, redemption, consummation. Attention is given to the literary, historical, cultural, and theological dimensions of Scripture as it offers a meta-narrative or "worldview-story." Emphasis is placed on the unity of Scripture as it reaches its fullness and fulfillment in Christ, while at the same time recognizing key developments and differences between the various chapters of the biblical storyline. Three Hours.

BIB2010 Scripture and Interpretation

Foundational principles of effective Bible study will be applied for personal study and small group Bible study leadership. Observational skills of the English text will be developed through hands-on activities and assignments. Hermeneutical principles will be applied to various biblical genres with the goal of

equipping the learner to interpret the text based on its historical/cultural and literary context. Application of the meaning of the text for spiritual formation will be emphasized as well. Three hours.

BIB2310 History of Christianity

Students will seek to discover what transpired in Christianity from the 1st century to modern times in order to understand what Christianity is in the present. They will identify the major events, personalities, and theological issues, both Western and non-Western, that shaped the development of Christianity. They will appreciate the challenges that the church faced as it matured in history, and they will gain perspective on the challenges still facing the church today. Prerequisite: BIB1050. This is an upper level course available to juniors and seniors. It is also offered at a graduate level. Three hours.

BUS 1010 Foundations of Business

Fundamentals of Business provide an overview and understanding of the current issues and challenges facing today's businesses, both small and large. The design of the course is to enable the class participants to improve their understanding of the basic concepts of business. The class is a broad survey of fundamental business concepts, such as management, marketing, human resources, accounting, and financial management and policy. General principles of business ethics and business law are also discussed. Students will reflect on all disciplines within the School of Business and be able to more readily decide a potential career path. This course introduces students to the business world, while it lays the foundation for their meaningful participation in more advanced classes. Three hours.

BUS 2220 Microeconomics

A study of issues arising in the microeconomic environment. Analyzes market structures, competition, and government's role in an economy as well as an evaluation of the efficiency and equity of the free market system. Three hours.

BUS 2430 Principles of Management

Surveys the four major managerial functions: planning, organizing, leading and controlling. Within a biblical framework examines developments from scientific management to ethics, diversity, social responsibility and globalization. Three hours

COM 1100 Public Speaking

A study of communication theory as applicable to public speaking. Students explore the components of an effective speech, as well as current applications of speaking skills. Emphasis will be placed on practicing and displaying these skills in a laboratory setting. Three hours.

COM 2130 Interpersonal Communication

An examination of the process of communication and interpersonal relationships focusing on the role of the self, people perception, the environment, and the interaction of interpersonal orientations. Personal skills in resolving conflict and stimulating friendships are examined through exposure to theory, practical exercises, and the analysis of experiences in current relationships. Three hours.

ECN 3000 Consumer Economics Consumer Economics is a course designed to prepare students to understand the economic system from a Biblical perspective and how it affects individuals as consumers producers and citizens. Students will integrate knowledge skills and practices required for management of resources in a technologically expanding global economy. Real world topics covered will include income money management spending and credit as well as saving and investing. Core skills in decision making problem solving critical thinking goal setting management of multiple roles and using technology are integrated into the course content. Three hours.

ENG 1100 Effective Writing

The principles involved in writing clear expository, persuasive, and researched papers are studied and practiced. In addition, the English language is examined from a linguistic perspective. Three Hours.

FYE 1010 Freshman Foundations

This is a practical, academic course which is intended to prepare new students to engage in three key areas of their first-year transition into college: Understanding who we are, understanding who they are, and understanding our Call. This course is designed to make their years at Grace the best experience possible. This course will help students discover their God-given strengths, navigate through current college issues, and help the student better understand what makes a Christian liberal arts education valuable. It will also introduce students to the value of service in the local community and introduce students to prospective departments and faculty within the institution, assisting in the selection process of choosing a major and a career. Three Hours.

HIS 1380 Contemporary America and the World

This course is a topical approach to the cultural history of the United States from the end of the Second World War to the present, with special emphasis on America's role in global affairs. Students will not only gain a broad understanding of America's place in recent world events but also a specialized knowledge of various relevant topics and their historical context. Topics covered in this class have included the Cold War, the 1960s, American evangelicalism, and terrorism. Three Hours.

HIS 3390 Religion in American History

From major world religions to a host of small religious movements, the variety of religious expression in America is almost endless. Indeed, religious pluralism and diversity has become one of the defining features of American society. Naturally, this diverse religious landscape has not taken place overnight. Rather, it has developed over centuries and has included a complex spectrum of theological approaches, ethical positions, charismatic men and women, ordinary citizens and even political involvement. This course is meant to provide students with an introduction to the religious diversity in America while emphasizing its historical context and development. Three hours.

HUM 2100 Creative Arts and Culture

Through a global, thematic approach, this course explores the human phenomenon of creativity. Posing the question "Why creative arts?" this course focuses on exploring how culture and creativity reflect each other within the realm of visual and performing arts. Through themes of survival, religion, the state, and self, this course examines artists' roles within cultures, the way art is made or performed, how meaning is derived, and how art is used, kept or destroyed. Required experiential activities for engaging in visual and performing arts include such things as attending museum exhibits, concerts or theatrical productions. Three hours.

HUM 2200 World Cultures

World Cultures is a team-taught course that seeks to develop a biblical lens for seeing the world in order to live meaningfully and biblically in increasingly multi-cultural societies. Major themes in the course include Christ's incarnation as a model for crossing cultural boundaries, tools necessary for the cultivation of cultural intelligence, an introduction to the basic beliefs of Islam, and a general awareness of world geography. Three hours.

Students who attend main campus will also need to complete a cross-cultural field experience

ICS 3650 Intercultural Ministry

This course is an overview of intercultural missions in which students will discover the importance of cultural value systems, intercultural communication, contextualization, and cultural adaptation, and how these issues affect biblical ministry in intercultural and multicultural contexts. Future pastors, youth ministers, Christian counselors, and other

Christian ministry personnel will become more effective in various intercultural situations by shaping their ministry to penetrate other cultures more deeply. Knowing how culture functions, the extent to which it shapes people, and how we are affected by our own culture keeps us from reading our cultural values into other contexts and into our interpretation of the Bible. It also guards against unknowingly imposing our cultural values on others. The course will not count toward the requirements of an undergraduate intercultural mission minor. Three hours.

LIT 3270 World Literature (Detroit Only)

A survey of the prominent literature from Europe, as well as from the rest of the world, excluding Britain and the U.S.A. By examining epics, dramas, short stories, novels, and poems, the student obtains a balanced background in the literary traditions which have arisen in diverse cultures. Three hours.

MAT 1120 College Algebra

Topics include algebraic operations, manipulation of functions, polynomial equation solutions, inequalities, logarithms, and exponentials. There will be practice with solving systems of equations, graphing, and algebra applications. Three credit hours.

MAT 3200 Probability and Statistics

This is an introductory course in probability and statistics. Topics covered include probability theorems and models, statistical techniques, and practices for applying statistical techniques in the world around us. Three hours.

MKT 2150 Marketing Principles

This course provides a decision-oriented overview of marketing management in modern organizations. The objectives of the course are to provide a broad introduction to marketing concepts, the role of marketing in society and in the firm, and the various factors that influence marketing decision making. Three hours.

MIS3220 Principles and Practice of Prayer

Students will examine the teaching of the Scriptures on the subject of prayer with a view to discovering the absolute necessity of a vital prayer experience in the life of the man or woman of God and in the life of the Church. Urgency, consistency, and effectiveness of prayer will all be discussed as well as practical guidance for fostering these. Significant time will be spent in the practice of prayer. Three hours.

PHI3000 Apologetics in a Postmodern World

The purpose of this course is to provide students with an introductory survey to the defense of the Christian worldview in its contemporary postmodern context. The course will cover areas such as: the biblical and theological justification for the apologetic task; issues surrounding apologetic methodology; strategies for effective presentation and argumentation; the development of a positive case for Christianity; common objections against the Christian worldview; and a critique of prevalent ideologies and worldviews. This course will address philosophical, historical, scientific, and cultural issues surrounding the defense of Christianity in the contemporary world. Three hours.

PHI 3200 Philosophy and Critical Thinking

This course is an introduction to Christianity and the life of the mind. It examines how faith and intellect relate. Course materials will include an examination of modern Christianity and ask if it is sufficiently rigorous to face the postmodern world. The course will also examine how to investigate an

idea by raising the right kinds of questions. How has Christianity come to us in history? What are its core ideas? Is theology static or a process? How does Christianity differ from other worldviews? How should a lively and vigorous Christianity be expressed in the lives of individuals and churches? This course is required in the liberal arts curriculum. Three hours.

POS 2010 Introduction to Political Thought

This course includes several approaches to political philosophy. First, it provides a general overview of the dominate political ideologies from the ancient to the contemporary world. Second, it provides a general survey of some of the more influential political thinkers whose writings and theories have given rise to the modern political landscape. This will focus heavily on the development of western political thought but may include selections from Islamic civilizations, Southeast Asia, or other non-western contexts. Third, this course will include an introduction to more recent thinkers, or even popular personalities, whose work is relevant to the intersection of faith and politics. Three hours.

PSY 1100 Introduction to Psychology

An introduction to psychology as the study of human behavior. Basic principles of psychology will be explored including the process of learning, memory, perception, sensation, motivation, and emotion. Personal and social aspects of human development will be emphasized. Three hours.

SCI 1140 Physical Science Survey

Activities and lectures will cover motion, energy, gravity, light, radiation, earth materials, and space. Three hours.

SOC 1100 Introduction to Sociology

An introductory study of humans functioning in society. Basic principles of sociology will be experienced including organization, structure, strata, and problems in American society. Emphasis will be placed on observational techniques that will help to develop a spirit of active participation in the world. Three hours.